

# SAND PROCESSING FILTERS

Partnering with the Sand Industry to provide the lowest moisture content since 1991.



**Compositech**  
Filters  
Customer Service. Superior Parts. Reliability.

## WE MAKE **PROJECTS** HAPPEN.

---

Compositech manufactures two lines of Horizontal Belt Filters (HBF) specifically for sand and silica processing. The Compositech Horizontal Vacuum Belt filter uses state-of-the-art vacuum filtration technology to offer an efficient and reliable solid/liquid separation unit for dewatering and washing of slurries.

### **We design equipment with a limited water requirement and a very dry output.**

In addition to our designed filters, Compositech has earned a reputation for manufacturing quality replacement parts for most filtration equipment in the industry. Our service crew is trained to maintain our equipment and also to repair, refurbish, and upgrade existing filtration equipment from other manufacturers.

*It is our mission to continually develop improved products and to provide parts and installation in a timely and cost-effective manner with a service standard unequaled in the filtration industry.*



## Horizontal Belt Filter

---

Compositech's 4600 series and 5500 series Horizontal Belt filters (HBF) are designed for easy maintenance as the non-drive side of the frame is calculated for easy removal of the drainage belt, pulleys, and support decks without complete disassembly of the filter.

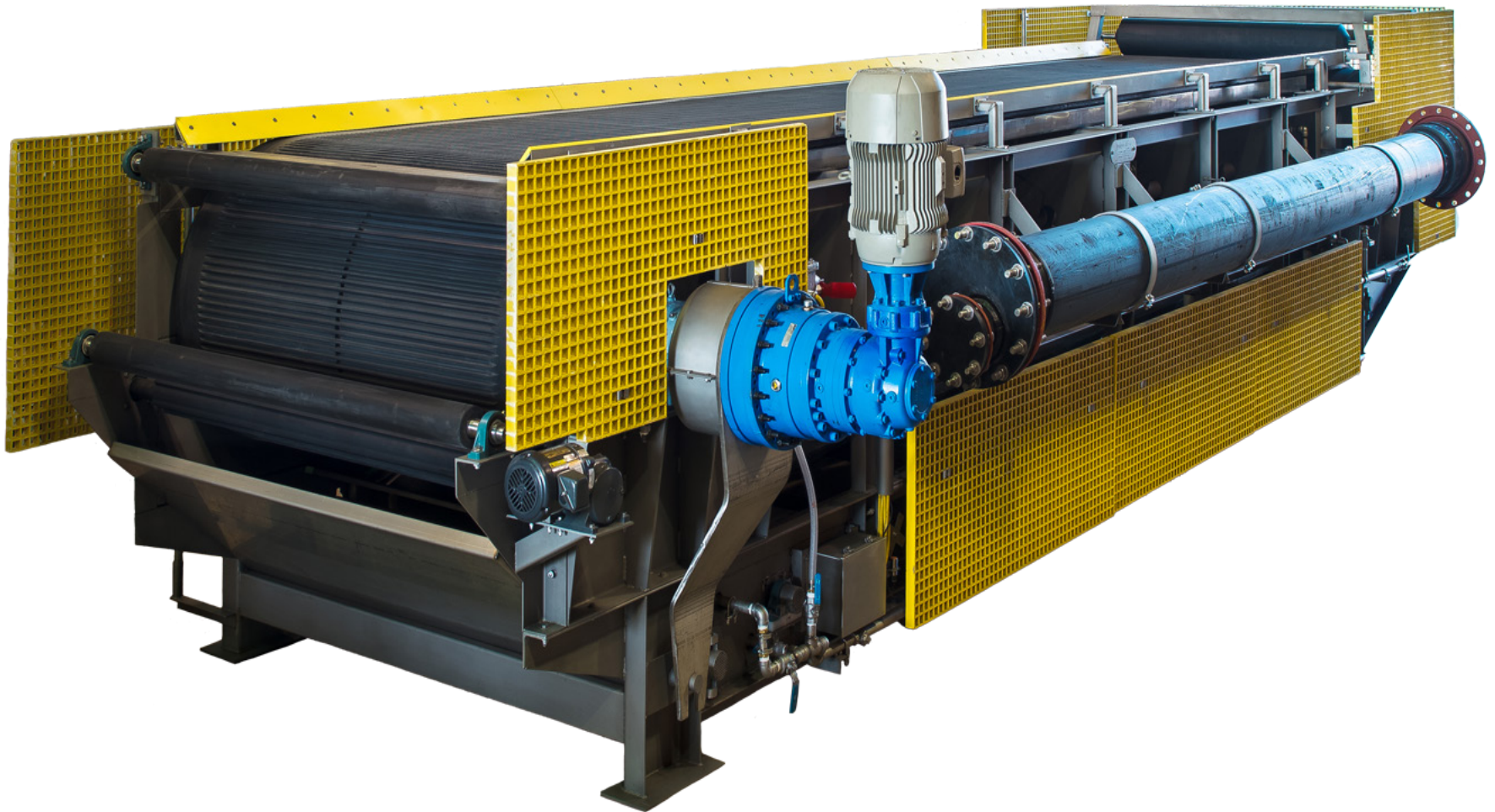
**Our HBF drainage belts are the highest quality available within the vacuum filtration industry.**

We manufacture our belts using heavy-duty conveyor belt textiles with a proprietary elastomer formulation. We use compounds designed for drainage belt applications and modified to meet specific chemical, thermal, and abrasive needs for each customer. Our molding process provides a more dense surface than any cut grooved belt is able to provide.

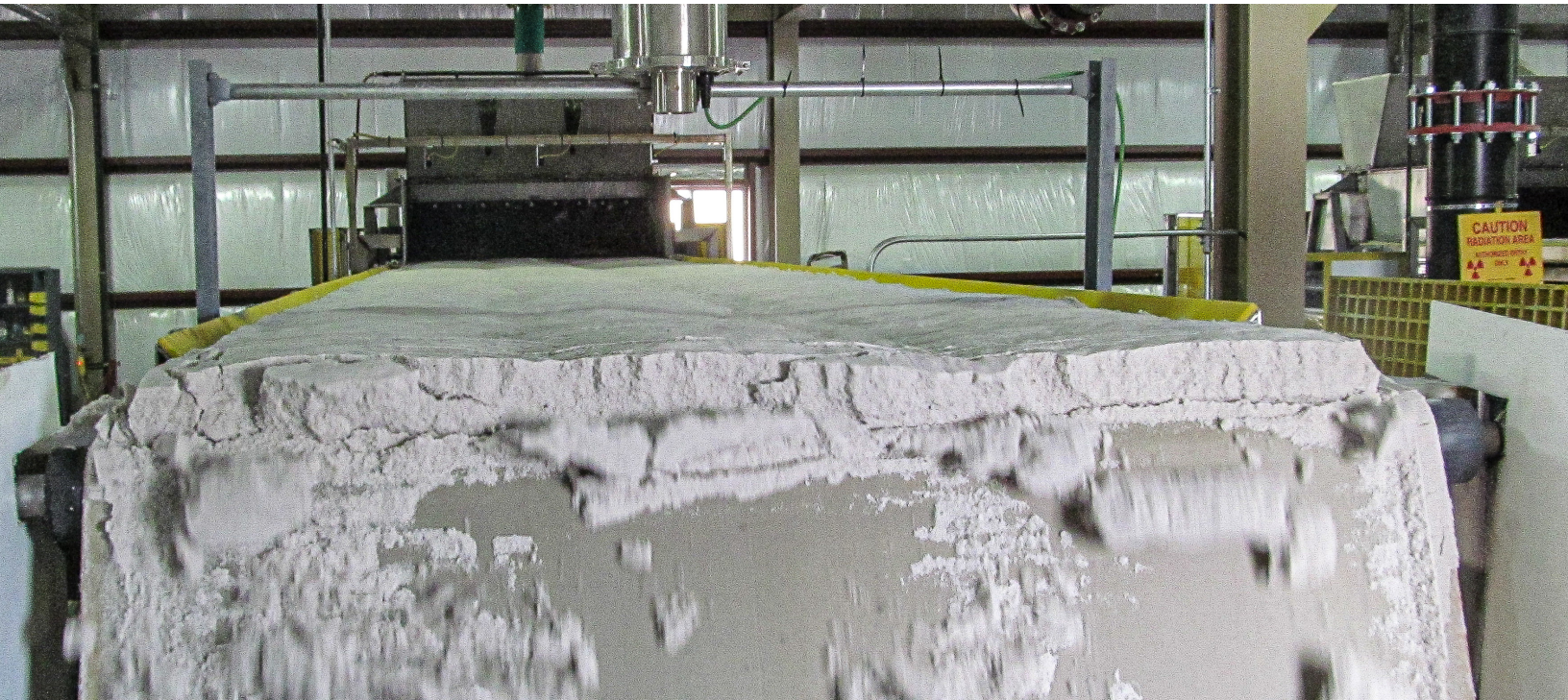
### KEY DESIGN ELEMENTS

- **Stainless Steel Tubular Construction**
- **Heavy Duty for continuous operation**
- **High Capacity all Molded Drainage Belt**
- **Contoured Belt Support Decks**
- **Pivot Roll / Air Bellows Cloth Alignment**
- **Vacuum Pan with Lowering Mechanism**
- **Replaceable Wear Belts**
- **Direct Connected Drives**
- **Deep Troughing Lip Supports**
- **Soft Mounted Wash Pipes**

**Our machines provide a filter cake with a moisture level of less than 5%!**



**Compositech Horizontal Belt Filter**



**Our machines are ideal for high volume silica processing as they utilize both gravity and vacuum forces for rapid separation of liquids from the coarse solids.**

Compositech's 5528 model is the biggest and most productive model made and is capable of producing up to 200 tons-per-hour (TPH) of dry sand.

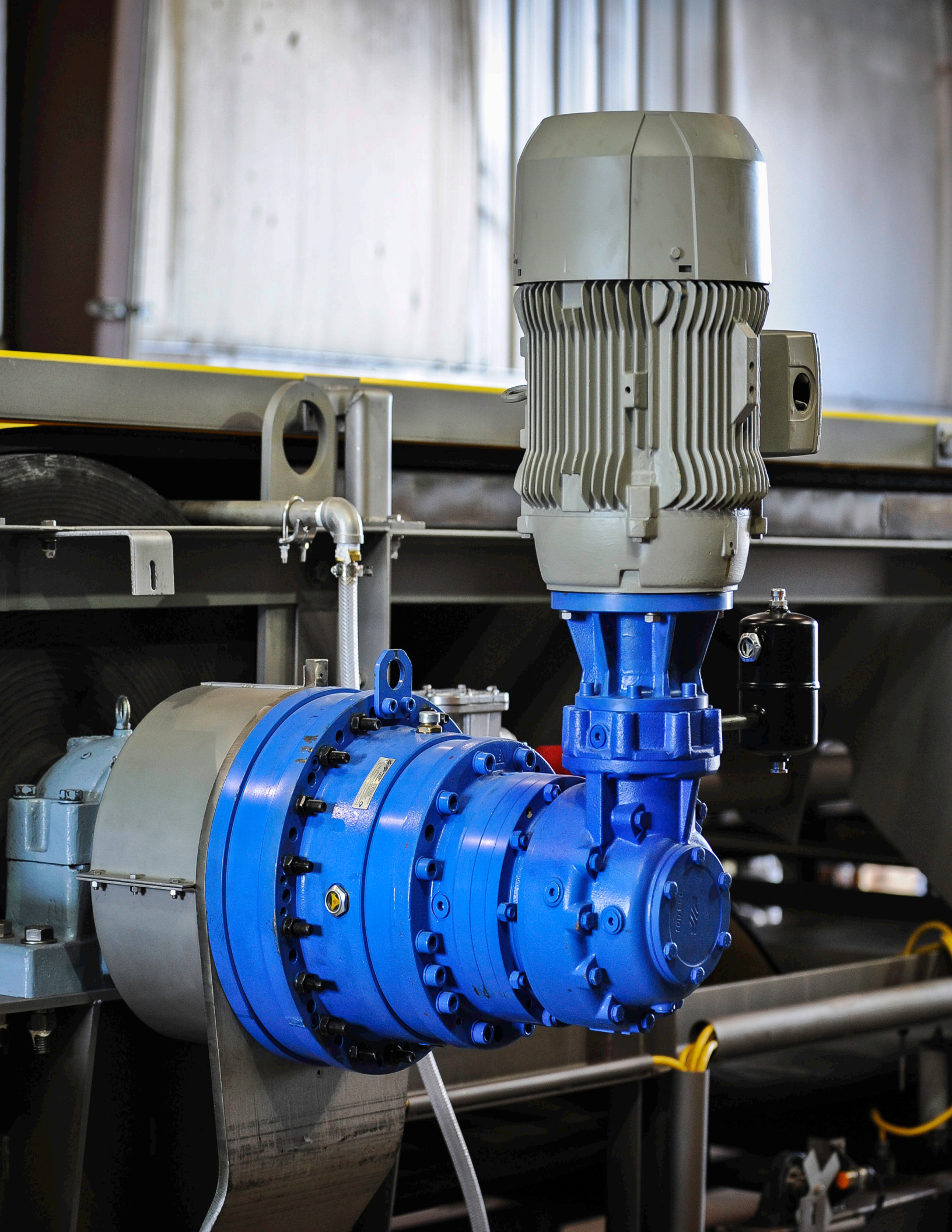
## **CAKE WASH**

---

Compositech's HBF is capable of washing soluble substances from the filter cake reducing residual moisture to very low levels in the dry zone.

- Multistage
- Single-run
- Counter-current flood washing

**Our components meet or beat the quality of the original equipment used by the filter manufacturer and are manufactured and warranted by Compositech and not by the original equipment manufacturer.**



## Assembly

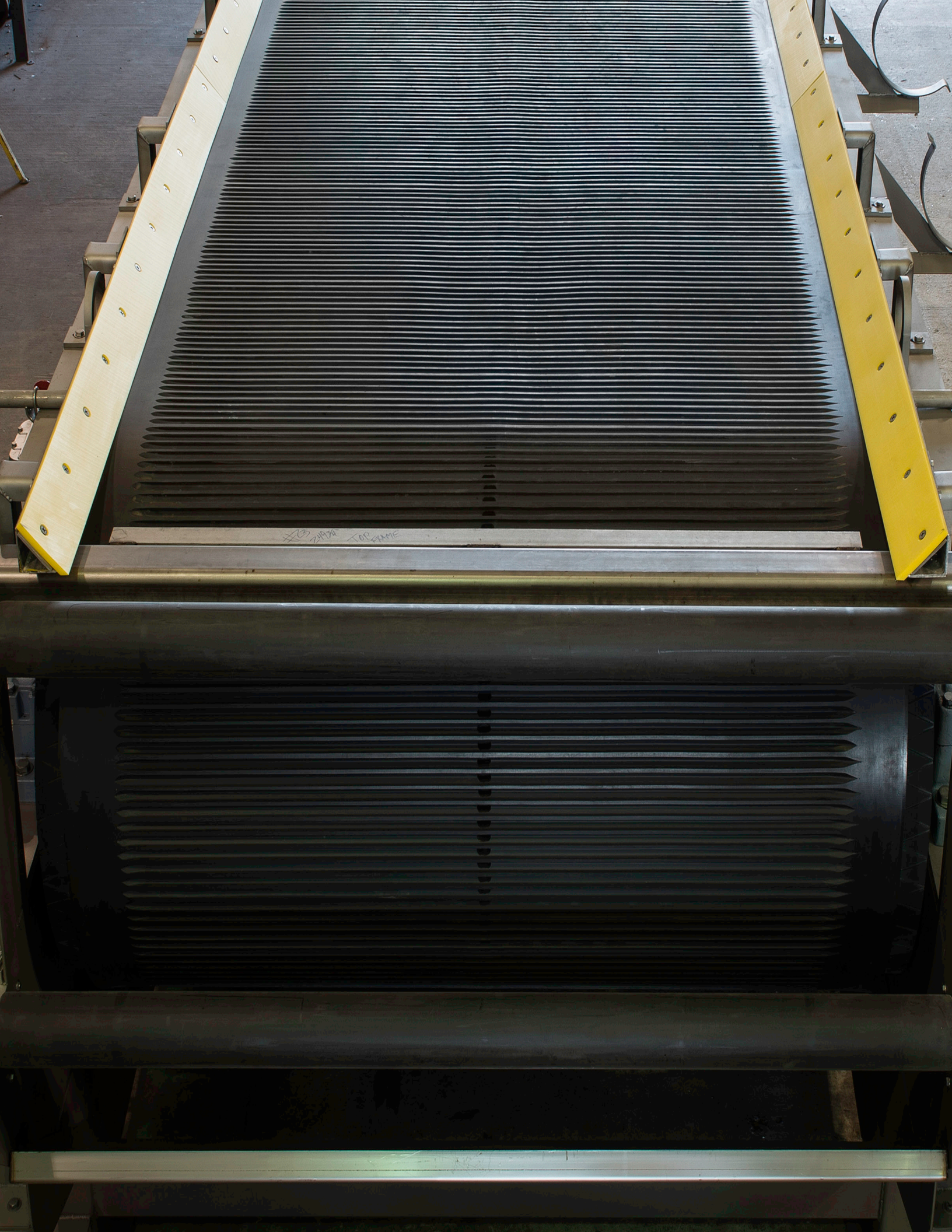
---

The frame for our 4000 and 5000 series consists of two stainless steel main frames. We offer a complete range of solutions for corrosive, abrasive and hot filtering applications; from the highest quality stainless steels to FRPs and plastics.

We supply our filters with full coverage stainless steel underfloor drain pans to collect all slurry spillage, wash water, and lubrication water and divert it through drains in the floor eliminating the need for a containment basin under the filter.

**Compositech is known industry wide for manufacturing the highest quality horizontal belt filter drainage belts available.**

- Using high quality materials, design, and manufacturing best-practices, our drainage belts are produced with optimal physical properties.
- Each belt we manufacture is made of heavy-duty conveyor belt textiles with a 12:1 safety ratio using our proprietary elastomer formulation.
- Compositech's elastomer compounds are designed for drainage belt applications and are modified to meet our customer's specific chemical, thermal, and abrasive requirements.



#3 21472 TOP FRAME



# Filtration Services

---

## Inspection

Preventive Maintenance can lengthen the life of your equipment as well as save time, and money in unexpected repairs and equipment downtime. Our technical staff offers inspection services in addition to your regularly scheduled maintenance.

Compositech's service personnel are experienced technicians that can perform a detailed inspection of your equipment and provide a written report which will pinpoint areas of concern. Whenever possible, we also provide onsite repairs. Give us a call today to schedule a visual inspection (281) 648-3557.



## On-site Repair/Rebuild

Rebuild and Repair services are offered and can be scheduled at your regular turnaround time.

Our service technicians can quickly perform routine maintenance at your plant. In addition to saving man hours, these services result in an overall savings in terms of the lifespan of your machinery.

## Refurbishment Services

Complete filter refurbishment is available for longer wear life at a substantial savings to your company. We can reengineer your old equipment to "like new" condition, upgrading and rebuilding your machinery at our facilities or yours. We are always on the lookout for quality used equipment which we can offer as a refurbish alternative to a larger capital investment project for our customers as available. Our technical teams are also available to install reconditioned equipment at your location.

---

In addition to our lines of filtration equipment, Compositech manufactures replacement parts for Ahlstrom, Alar, Ametek, Andritz, Ashbrook, Beloit-Jones™, Carter, Celleco™, Dorr-Oliver®, Eimco™, Envirex, Enviroquip, Filtres Philippe, IMPCO™, Komline-Sanderson®, Pannevis, Parkson, Peterson, Sernagiotto/SernaTech, Westech, US Filter, and most other filter brands. Our goal in manufacturing filter replacement parts is to offer upgrades to filter performance and reliability. **Our parts meet vigorous standards for quality and durability and are designed to offer increased filter performance and lower maintenance costs.**

# Contact Us



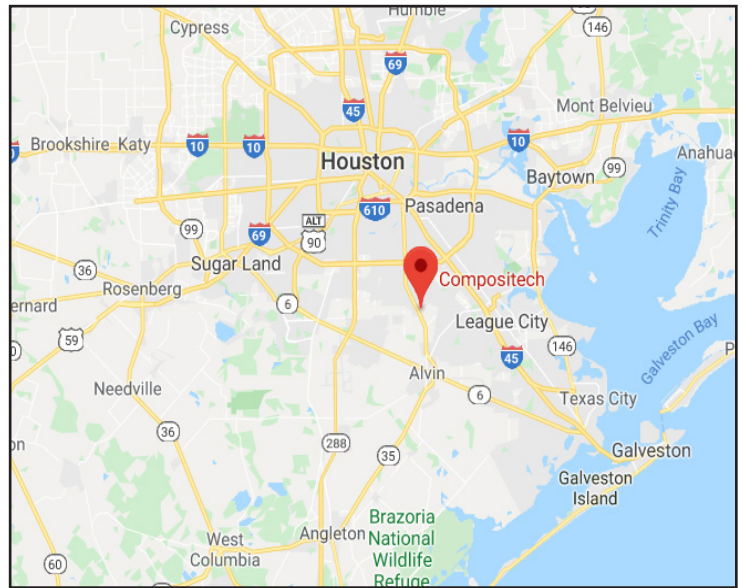
4531 S. Main St. Pearland, TX  
77581 / P.O. Box 2673 Pearland,  
TX 77588



[Sales@compositech-filters.com](mailto:Sales@compositech-filters.com)



Tel: (281) 648-3557  
Fax: (281) 648-4515



[Compositech-filters.com](http://Compositech-filters.com)



[CompositechProductsManufacturing.com](http://CompositechProductsManufacturing.com)



[CompositechProductsManufacturing.com](http://CompositechProductsManufacturing.com)